

INDUSTRIAL AUTOMATION



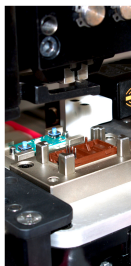
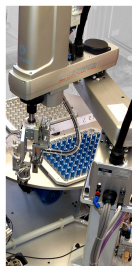
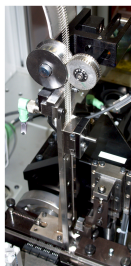


ATS company deals in **industrial automation** since the early '80s. In this context, produces **equipment, machines, plants**, which integrate the activities of **assembly and testing**.

ATS company proposes, designs and manufactures **benches, tables, lines, work cells**. The real ATS product is the **special machine**, the "one solution" able to meet customer requirements perfectly.

The areas of work are the most diversified, such as **automotive, electrical appliances, electromechanical and electronic, lighting, telephony, office automation, medical**.

The care of the project, from design to commissioning, makes each product a **realization comparable to ones of mass production**.



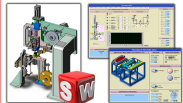
ATS company realizes and/or integrates in its realizations **manufacturing equipment, insertion heads, joining and blanking dies, welding groups, laser cutting and marking systems, inspection units by camera, mono and bi component dispensing systems** ...

ATS realizations use pneumatic, hydraulic and electrically controlled devices. In the **test benches** you can find performing and integrated equipments and control systems. In the **loading systems** and other **automatic cells** find a placement scara and 6 axis robots.

ATS company works on contacts, connectors, switches, printed circuits, vehicle user interfaces and controls, glazing, lights and lamps, filtering groups, pumps and clutches, toner, ribbons and cartridges, printing heads, printers, opening and starting coded devices, safety and life-saving devices, pacemaker, oxygenators, catheters for angioplasty....

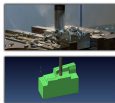
DESIGN

ATS realizes directly all the activities of mechanical design, plant engineering and software. The mechanical design is developed in 3D. The interface and control systems use the most advanced scada systems.



REALIZATION

The most important mechanical parts are produced directly on machining centers, die-sinking and wire cutting EDM of ATS property



OPERATION AND SERVICE

ATS staff operates directly on assembly, commissioning and service for all the machines realized. The development and integration of preceding realizations are element of continuity between supplier and customer.





A.T.S. S.r.l.
Via Avvocato G.Agnelli 18/A - 10043 ORBASSANO (TO) - ITALY
tel. +39 011.957.38.58 - fax. +39 011.901.93.34
C.F. e P.IVA: 02972220012
mail: info@atsautomazione.it
web: atsautomazione.it

